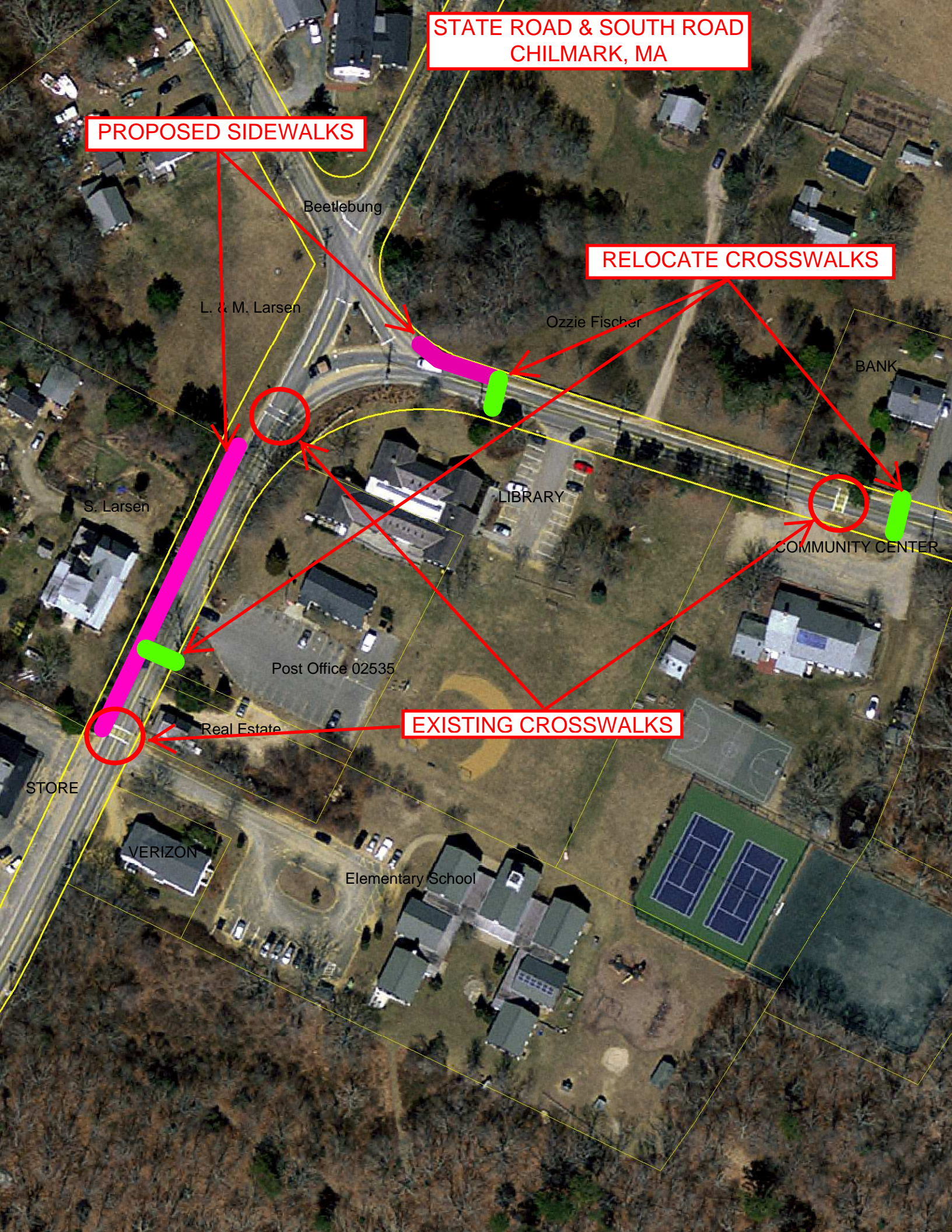


**STATE ROAD & SOUTH ROAD  
CHILMARK, MA**

**PROPOSED SIDEWALKS**

**RELOCATE CROSSWALKS**

**EXISTING CROSSWALKS**



Beetlebung

L. & M. Larsen

Ozzie Fischer

BANK

S. Larsen

LIBRARY

COMMUNITY CENTER

Post Office 02535

Real Estate

**EXISTING CROSSWALKS**

STORE

VERIZON

Elementary School